

YEAR

2013

LINK CORNWALL ST (from WATERLOO RD to NAM CHEONG ST)

COVERAGE (B) STATION

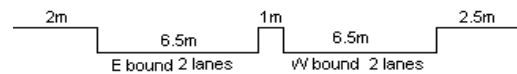
4206

ROAD NETWORK

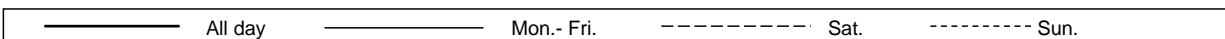
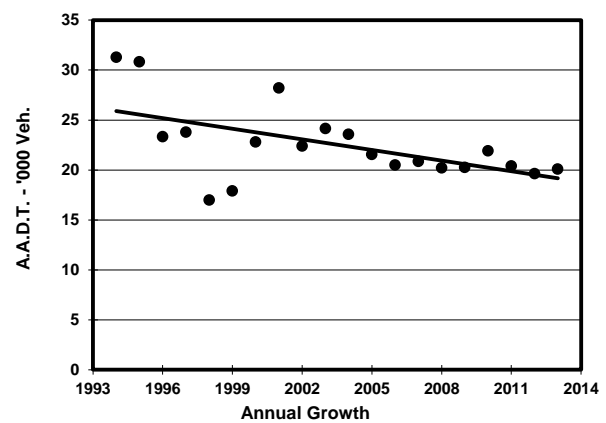
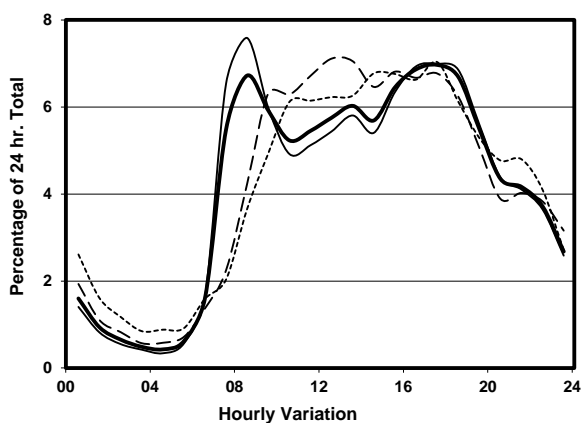
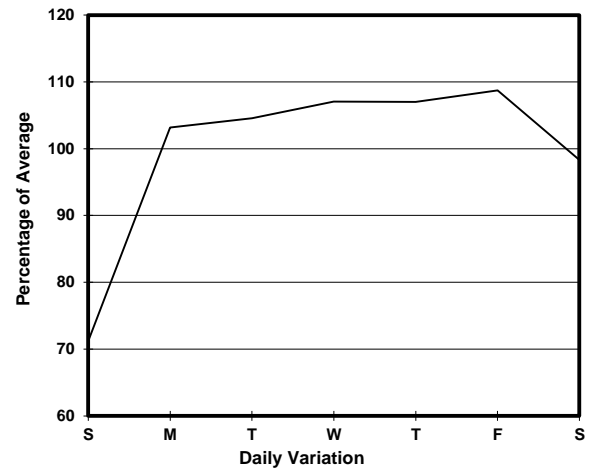
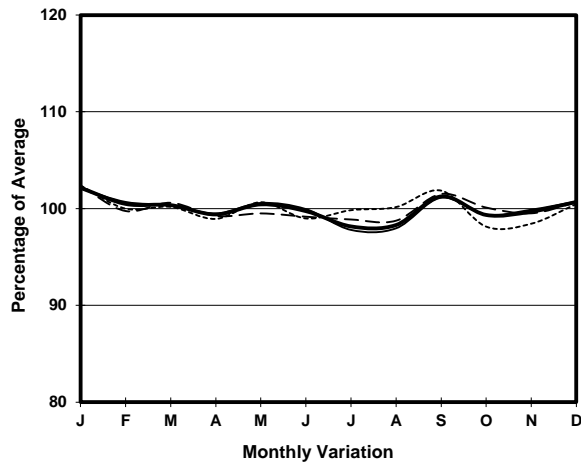
MAJOR

ROAD TYPE

DISTRICT DISTRIBUTOR



1. TRAFFIC FLOW VARIATION AND GROWTH



2. TRAFFIC CHARACTERISTICS (BY DIRECTION)

Parameter	All - Day	Mon. - Fri.	Sat.	Sun.
EAST BOUND				
A.A.D.T.	10120	10740	9950	8370
R 12 / 24 - %	73.8	74.4	73.9	69.4
R 16 / 24 - %	90.3	90.9	89.1	87.1
AM Peak Hour	0800-0900	0800-0900	0900-1000	0900-1000
One-way flow at AM peak hour	720	860	720	460
T - % (AM)	-	12.6	-	-
PM Peak Hour	1800-1900	1800-1900	1700-1800	1700-1800
One-way flow at PM peak hour	680	750	640	590
T - % (PM)	-	6.9	-	-
Prop.of commercial vehicles - 16 hr.	-	9.4	-	-
WEST BOUND				
A.A.D.T.	9970	10920	10120	6170
R 12 / 24 - %	72.8	73.5	72	67.8
R 16 / 24 - %	91.7	92.4	90.4	88.4
AM Peak Hour	0800-0900	0800-0900	0900-1000	0900-1000
One-way flow at AM peak hour	640	790	550	260
T - % (AM)	-	9.2	-	-
PM Peak Hour	1700-1800	1700-1800	1600-1700	1600-1700
One-way flow at PM peak hour	750	830	740	440
T - % (PM)	-	10.5	-	-
Prop.of commercial vehicles - 16 hr.	-	9.3	-	-

3. OTHER INFORMATION AND COMMENT

4. Vehicle classification and occupancy - Monday to Friday

Time		Class of vehicle									
		Motor Cycle	Private Car	Taxi	Private LB	PLB	Goods veh.		Non Fr. Bus	Fr. Bus	
							Light	M & H		SD	DD
0700-0800	Pro	4.0	33.3	28.4	5.0	0.0	8.0	1.0	16.4	0.5	3.5
	Ocp	1.0	1.3	2.0	7.1	0.0	1.9	2.0	15.2	2.3	45.3
0800-0900 Peak hour	Pro	1.1	63.9	14.1	2.0	0.0	7.8	2.2	6.7	0.1	2.2
	Ocp	1.0	1.5	1.8	7.4	0.0	1.5	1.7	17.1	4.0	45.1
0900-1000	Pro	1.5	64.0	10.6	1.8	0.0	17.0	0.6	2.1	0.0	2.4
	Ocp	1.0	1.3	1.9	2.5	0.0	1.6	1.5	11.6	0.0	25.3
1000-1100	Pro	3.4	50.0	16.4	1.1	0.0	22.0	1.9	2.2	0.0	3.0
	Ocp	1.0	1.4	1.7	3.3	0.0	1.6	2.2	7.5	0.0	23.4
1100-1200	Pro	3.1	39.6	24.2	1.3	0.0	24.7	0.4	3.5	0.0	3.1
	Ocp	1.0	1.4	1.9	1.3	0.0	1.6	2.0	5.6	0.0	26.0
1200-1300	Pro	0.7	49.2	20.2	2.0	0.0	14.8	2.7	8.1	0.0	2.2
	Ocp	1.0	1.6	1.9	11.5	0.0	1.6	1.6	21.7	0.0	33.7
1300-1400	Pro	2.3	51.3	17.2	7.0	0.0	9.8	1.6	8.2	0.0	2.5
	Ocp	1.0	1.7	1.9	3.3	0.0	1.6	1.3	9.9	0.0	32.2
1400-1500	Pro	0.8	53.1	19.3	2.0	0.0	16.1	2.8	3.2	0.0	2.7
	Ocp	1.0	1.5	1.9	1.4	0.0	1.6	1.1	8.1	0.0	33.1
1500-1600	Pro	0.7	48.9	19.2	4.0	0.0	13.5	2.3	9.2	0.0	2.2
	Ocp	1.0	1.5	1.8	6.8	0.0	1.9	1.1	19.2	0.0	31.2
1600-1700	Pro	3.3	51.9	20.4	2.4	0.0	12.5	2.7	4.9	0.0	2.0
	Ocp	1.1	1.5	1.6	4.6	0.0	1.5	1.2	8.6	0.0	35.7
1700-1800	Pro	2.0	56.2	20.3	3.1	0.0	9.6	2.3	4.2	0.0	2.3
	Ocp	1.0	1.6	2.0	9.6	0.0	1.6	1.4	17.9	0.0	43.6
1800-1900	Pro	4.4	62.1	16.3	0.0	0.0	8.7	1.5	5.0	0.0	2.1
	Ocp	1.0	1.4	1.9	0.0	0.0	1.5	1.6	9.2	0.0	53.1
1900-2000	Pro	3.4	64.4	19.3	0.6	0.3	5.8	0.3	3.7	0.0	2.2
	Ocp	1.0	1.6	1.8	2.0	1.0	1.8	1.0	9.6	0.0	44.6
2000-2100	Pro	4.7	56.9	23.7	1.2	0.4	8.7	0.4	1.2	0.0	2.9
	Ocp	1.1	1.5	1.9	1.7	1.0	1.6	3.0	3.0	0.0	36.3
2100-2200	Pro	2.4	50.2	33.0	0.0	0.0	7.6	1.4	1.9	0.1	3.3
	Ocp	1.2	1.6	2.0	0.0	0.0	1.8	1.7	9.8	1.0	34.1
2200-2300	Pro	1.6	56.6	30.2	0.0	0.0	4.9	0.5	2.2	0.1	3.9
	Ocp	1.0	1.6	1.7	0.0	0.0	1.8	1.0	5.0	1.0	28.8
16 hours	Pro	2.4	54.4	19.8	2.1	0.1	11.9	1.6	5.2	0.1	2.5
	Ocp	1.0	1.5	1.9	5.6	1.0	1.6	1.5	13.8	2.1	36.0

Legend

Pro. Proportion of vehicles in % (Sum may not add up to 100% due to figure rounding)
Ocp. Average occupancy of vehicles
M&H Medium and Heavy